



## **INFORMATION**

- Do not violate or infringe the copyright law and other international copyright laws while using this player for recording.
- The copyright law forbids unauthorized reproduction of copyrighted music for any other purpose other than self-entertainment without the author's permission.
- For the purpose of self-entertainment, it is strictly prohibited to compile and disseminate copyrighted music to a third party without the author's permission.
- If copyrighted music is intentionally disseminated by means of information network without the author's permission, the infringer will violate "the right of communications to the public" and "the right of distribution" and shall be subject to the criminal charges.
- Before introducing or using the player, please back-up all essential information stored in PCs. The player may power off if suffers in lightning strikes or certain static electricity. You can turn on the player again or press the RESET hole to re-initialize the system of your player.
- Trademarks and trade names used in this instruction manual are owned by their respective companies or organizations.
- Before using this device, please read this user's manual so as to properly use the product. For the purpose of better services, the content in this manual may be altered. There will be no separate notice with regard to any changes in the performance and functions of the product.

## **SAFETY RULES**

- Please follow the rules depicted in this manual closely to ensure your safety. Before using the player, we would strongly encourage you to read through this user manual
- Be more wary of any edges, uneven surfaces, metal parts, accessories and its packaging so as to prevent any possible injury or damage.
- Keep this player out of reach of children. Take note that this player is not edible and should not be placed in your mouth.
- Do not modify, repair or dismantle the player. Doing so may result in fires, electric shocks, complete breakdown of the player, etc. All of which, are not covered under warranty.

- Do not use any diluents or volatile liquid to clean the player. Keep in mind that the surface of the player should only be wiped with a dry cloth.
- Do not use this player in locations whereby there are high-temperatures or high humidity levels (For instance, bathrooms); ideally, the player should be used in a location free of dust and exposure to direct sunlight.
- Do not insert foreign objects, such as pins, into this player.
- Do not touch this player when your hands are wet as this may result in electric shocks.
- Be extremely cautious while using headphone /earphones as they may strangle the user when entangled.
- Turn down the volume before/while using this player as sudden loud sounds may damage your ear drums.
- Refrain from dropping the player as well as any collision with other objects.
- When plugging in/out the headphone/earphones or wires please hold the player and jacks firmly to prevent the wires from breaking and the player from dropping.
- If using the player while walking, do pay attention to the traffic situations and road conditions.
- Do not use this player when in hazardous locations.
- Should any abnormal situations or problems occur while using the player, discontinue use of player immediately.

## Contents

|                                   |    |
|-----------------------------------|----|
| 1. GETTING START .....            | 3  |
| 1.1. FEATURES .....               | 3  |
| 1.2. BUTTONS DESCRIPTION .....    | 4  |
| 1.3. INTERFACE OPERATION .....    | 5  |
| 1.4. BATTERY CHARGING .....       | 7  |
| 2. CONNECTED TO THE COMPUTER..... | 8  |
| 2.1. COPY FILE INTO DEVICE .....  | 8  |
| 2.2. SAFETY REMOVE .....          | 9  |
| 2.3. FORMAT .....                 | 10 |
| 3. OPERATION INTRODUCTION.....    | 11 |
| 3.1. BASIC OPERATION .....        | 11 |
| 4. MUSIC MODE.....                | 12 |
| 4.1. MUSIC BASIC OPERATION.....   | 12 |
| 4.2. MUSIC SETTING .....          | 12 |
| 5. MOVIE MODE.....                | 15 |
| 5.1. MOVIE BASIC OPERATION .....  | 15 |
| 5.2. VIDEO SETTING .....          | 16 |
| 6. PICTURE.....                   | 17 |
| 6.1. PICTURE BASIC OPERATION..... | 17 |
| 7. RADIO .....                    | 18 |
| 7.1. RADIO BASIC OPERATION .....  | 18 |
| 8. RECORD .....                   | 20 |
| 8.1. RECORD BASIC OPERATION.....  | 20 |
| 9. E-BOOK .....                   | 22 |
| 9.1. E-BOOK BASIC OPERATION ..... | 22 |
| 9.2. E-BOOK SETTING .....         | 22 |
| 10. FILE .....                    | 24 |
| 10.1. FILE BASIC OPERATION .....  | 24 |
| 11. SETTING .....                 | 25 |
| 12. FORMAT LIST .....             | 27 |
| 13. TROUBLE SHOOTING .....        | 27 |

# 1. GETTING START

Thank you for purchasing the **VX585HD** versatile digital audio player, that delivers a combination of style, features and user friendliness. It is the best combination that you cannot find anywhere else a new experience of powerful, yet intuitive control over your multimedia collection.

## 1.1.Features

- 4.3" true color TFT LCD display (16:9) (resolution 480x272, 16-million-color)
- 170° wide angle
- Support audio (MP3, WMA, WMA/VBR, APE, FLAC, AAC, AC3)
- Support video (RM, RMVB, AVI(Divx and Xvid), ASF, WMV, 3GP, H.263, H.264, Mpeg2, Mpeg4)
- Support SRT subtitle of AVI
- Support photo (JPG, BMP, GIF)
- Support Micro SD / Micro SDHC.
- USB 2.0 High-speed.
- Support ID3 tag.
- Play Music and Display Lyric (.lrc) Contemporaneously.
- High Quality record by built-in microphone.
- Integrated FM radio with 40 stations memory.
- Personalize your background.
- Built-in speakers.
- Support TV OUT (YPbPr port, definition up to 480i or 720x480)

## 1.2.Buttons description



1. HDMI TV Out.
2. : USB port.
3. : Decrease volume.
4. : Increase volume.
5. : Earphone jack.
6. Reset.
7. : Exit.
8. : Return to the previous menu/the previous item/fast rewind
9. : Enter the menu/the next item/fast forward.
10. Menu/ Select
11. : Play/Pause/Stop  
Turn On when (when On/Off switch slider is in On position) :  
Press for 5 seconds to turn on.
12. On/Off switch slider.
13. Micro SD/Micro SDHC Card socket.
14. DC-in jack.

**Note** : If the player is subjected to strong extraneous electrical noise or shock during use, or all the functions will not work properly or the display incorrectly, in such cases, please press “RESET” key to restart the device.

## 1.3.Interface Operation

### 1.3.1 Main Menu



1. Press ► to enter the current item.
2. Press ◀◀ to move right.
3. Press ▶▶ to move left.

### 1.3.2 Submenu



1. Press ► to enter the current item.
2. Press ◀◀ to move up.
3. Press ▶▶ to move down.

### 1.3.3 Playing Interface






1. Artist / Song / Album name.
2. Volume ( 0~30 )
3. Battery status.
4. Repeat Mode.
5. The total time of the song.
6. The order of the current song / Total number of songs.
7. Lyric. (It would display the lyric if there is LRC file)
8. Equalizer Display. (It would display the Equalizer Display if there is no LRC file)
9. The current song playing time.
10. Play Mode : ► playing || pause.

## 1.4. Battery charging

Please use AC adapter to charging battery. Generally, it takes about 8 hours for full charge.

Charging Method : AC-adapter ( DC 5.2V, 2A )

Charging Status :

- Battery low : 
- Charging : 
- Battery full : 
- Recharging would display as below :



### Note:

- At the first time, please recharge for 8 hours.
- Recharge time is about 5~8 hours.
- Please use our AC adapter. It can't recharge by USB.
- Don't recharge for too long time that damages the battery life.
- The battery could be over discharged if the player is not used for a long time (over three months). To avoid over discharge, fully charge the player every two or three month and always keep the voltage of the battery above 50%.

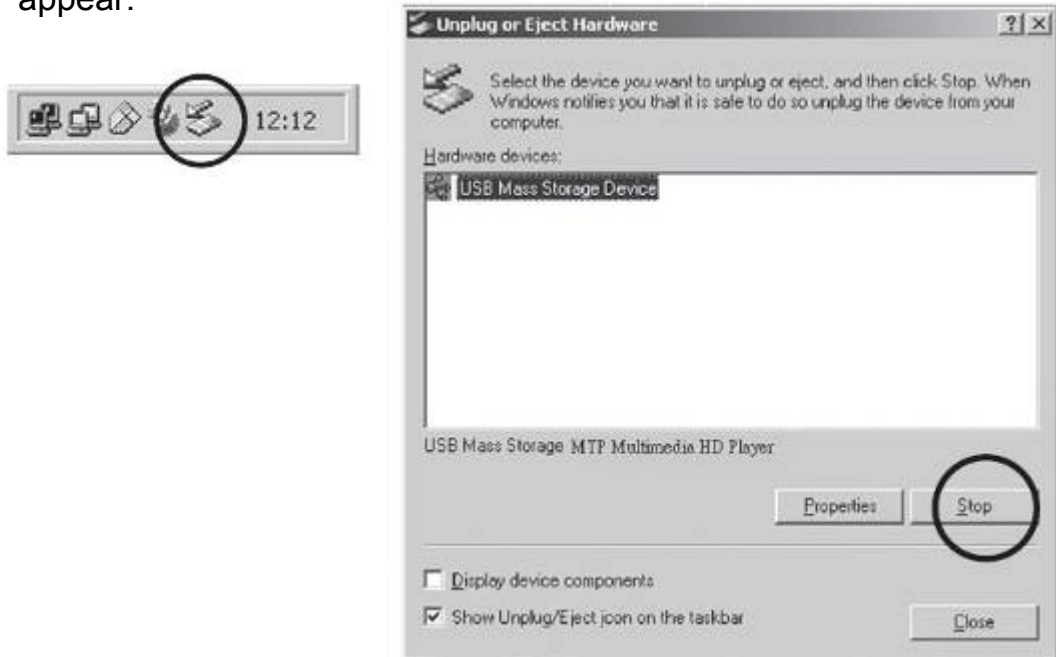




## 2.2. Safety remove

Please follow the steps to remove the device by safety remove to keep your data safely on the device.

1. Double click the hardware icon on the task tray of your computer as below:
2. Click the popup message as shown below, then a window will appear.



3. Select your player and click "ok" button in the popup window to confirm the disconnection.
4. When the popup window shows "Safe To Remove Hardware", click "ok" and disconnect the USB cable from PC.

### **2.3.Format**

File not found, file error, or recorded file can't be saved may due to the problem of FAT error. In the case, please reformat the device for problem shooting.

- Please backup your data before you format the device.
- Click the right button of mouse on the removable disk icon. Select "format" item from the pop menu.
- Select FAT32/NTFS format.
- Then click "OK" to process the reformat.

### 3. Operation Introduction

#### 3.1. Basic Operation

**- Turn On/Off :**

- Switch to On position : Press ►II for 5 seconds.
- Turn Off : Switch to Off position

**- Adjust Volume :**

- Press + or – to increase or decrease the volume.
- Volume Range : 0-30

**- Return to the Main Menu :**

- In any mode, press ⏻ for 5 seconds to return the main menu.

**- Lock/Unlock :**

- **Lock** : Under “Setting” set the time when the device would be locked, and then press ►II
- **Unlock** : Press + for 3 seconds to unlock.

## **4. Music Mode**

### **4.1. Music Basic Operation**

#### **Play / pause**

- While the song is paused or stopped, press ►|| to play.
- While the song is playing, press ►|| to pause.

#### **The Previous Song / The Next Song**

- press ►► or ◀◀ to jump to the previous or next song.

#### **Fast Forward / Fast Rewind**

- press ►► or ◀◀ to fast forward or rewind.

#### **Adjust Volume**

- Press + or – to increase or decrease the volume.
- Volume Range : 0-30

#### **Lyric and ID3**

- Put MP3 file ( .mp3 ) and Lyric file (.lrc) in the same folder, and then play this MP3 file.

### **4.2. Music Setting**

#### **Now Playing**

It would show the song playing.

If there is no song playing, then can't enter this submenu.

#### **Search Music**

Press + / – to move up / down ,

press ◀◀ / ►► to move left / right.

- This Search function is only for English letters or numbers.



### All Songs

It shows the all songs in built-in memory of the device.

### Folder

It shows the all folders in built-in memory of the device.

### Album

It shows the all albums of songs in built-in memory of the device.

### Artist

It shows the all artists of songs in built-in memory of the device.

### Title

It shows the all titles of songs in built-in memory of the device.

### Play Mode

|           |                      |
|-----------|----------------------|
| Play Mode | All Repeat (Default) |
|           | Order                |
|           | Shuffle              |
|           | Repeat Once          |
|           | Once                 |

### Background Play

- On (Default)

■ Off

### **Update Music Library**

Update all songs to “All Songs”

## 5. Movie Mode



### 5.1. Movie Basic Operation

#### Play/Pause

- While the movie is paused or stopped, press ►|| to play.
- While the movie is playing, press ►|| to pause.

#### The Previous Movie/The Next Movie

- While the movie playing, press ►► or ◀◀ to jump to the previous or next movie.

#### Fast Forward/Fast Rewind

- While the movie playing, press ►► or ◀◀ to fast forward or rewind.

#### Adjust Volume

- Press + or – to increase or decrease the volume.
- Volume Range : 0-30

#### 返回

- Press ⏻ key for 3 seconds to exit video playing.

#### TVOUT

- While playing video, press ►|| or ⏻ key to show a pop window. Press ►► or ◀◀ key to choose “TVOUT” or 🖥️, and press ►|| key to TVOUT. If press ►|| key again, it would cancel TVOUT.



## **5.2.Video Setting**

### **Continue Play**

- On (Default)
- Off

### **Zoom Mode**

- Normal (Default)
- Fill Box
- Full Screen
- Fit 10%
- Fit 20%
- Fit 30%
- Zoom 50%
- Zoom 100%
- Zoom 150%
- Zoom 200%

### **TV Output types**

- Standard Definition
- Component Output (Default)

### **TV System Select**

- NTSC
- PAL (Default)

## 6. Picture





### 6.1. Picture Basic Operation

#### The previous Picture / The Next Picture

- After choosing a picture, press ►► or ◀◀ to jump to the previous or next picture.

#### Rotate the Picture / Set As Background

- Press ►► to select  for picture rotation clockwise 90°.
- Press ►► to select  as background.



## 7. Radio

### Note :

- Listening to the radio must insert the earphone to the device as antenna.
- It can't be turned off during automatic channels searching works.

### 7.1.Radio Basic Operation

#### Listen to Radio

We suggest that use the automatic channels searching at the first time enter the Radio menu.

- Press ►► or ◀◀ to choose the previous or next channels.
- Press ►|| to choose the manual searching, and press ►► or ◀◀ to adjust the frequency and press ►|| to save the channel.



#### FM List

Display the current channels saved. Press ►► or ◀◀ to select the channel, and press ►|| to delete or listen to the channel.

#### Update FM Playlist

Choose the way update channel list between manual or automatic searching.

#### FM Transmitter Setting

It can transmit music to other device with FM equipment.

##### Frequency

- Press ►► or ◀◀ to adjust the frequency.

- Press + or – adjust the frequency from 76.0 to 108.0MHz.

#### **Switch**

- On
- Off (Default)

#### **Radio Record**

- Record the program in the current channel.

#### **Background Play**

- On (Default)
- Off

#### **Choose FM Playlist**

- Internal (Default)
- External

#### **Signal Power Adjust**

Set the sensitivity level of searching the FM channels' signal.

- Low
- Medium
- High
- Auto (Default)

#### **Stereo Sound**

- On (Default)
- Off

#### **FM Region**

- China (Default)
- Europe
- U.S.A
- Japan
- Campus band

#### **FM Record Quality**

- Low
- Medium
- High (Default)

## 8. Record



### 8.1. Record Basic Operation

#### Start Record

Press ►|| to start recording. if press ►|| again, recording would be paused.

Press ⏻ to stop recording and save the voice file.

#### Play Record

Press ►|| to play the voice file ◦ Press ⏻ to return to the previous menu.

#### 1. Play/Pause

- While the song is paused or stopped, press ►|| to play.
- While the song is playing, press ►|| to pause.

#### 2. The Previous Song/The Next Song

- press ►► or ◀◀ to jump to the previous or next song.

#### 3. Fast Forward/Fast Rewind

- press ►► or ◀◀ to fast forward or rewind.

#### 4. Adjust Volume

- Press + or – to increase or decrease the volume.
- Volume Range : 0-30

#### Record Quality

- Low
- Medium
- High (Default)

**Record Volume**

- Volume 1
- Volume 2
- Volume 3
- Volume 4
- Volume 5 (Default)

## 9. E-Book



### 9.1.E-Book Basic Operation

#### The Previous Page / Next Page

- While reading the article, press ►► or ◀◀ to go the next or previous page.

### 9.2.E-Book Setting

While reading the article, press ►|| to pop a window. Press ►► or ◀◀ to select the function and press ►|| to enter.

#### Auto Play

Set the time for automatic line jumping.

- 100 msec
- 200 msec
- 300 msec
- 400 msec
- 500 msec

#### Set Bookmark

Set the current location as a bookmark, 4 bookmarks at most.

#### Get Bookmark

Access the preset bookmark and jump to its location.

**Auto Next Page**

Set the time for automatic page jumping.

- 10 sec
- 15 sec
- 20 sec
- 25 sec
- 35 sec

**E-Book Font**

- Big Font (Default)
- Small

**Font Color**

- White (Default)
- Black
- Blue
- Green
- Red
- Gray

**TTS read**

- Read the article aloud automatically.



## 10. File



### 10.1. File Basic Operation

- Choose a file, and press ►II to show a pop window.
- Press ►► or ◀◀ to select “Play” to play the file.
- Press ►► or ◀◀ to select “Delete” to delete the file.
- Press ►► or ◀◀ to select “Copy”, and then press ►II to select “Paste” to paste that file copied in the place you select.
- Press ↺ to cancel this pop window.

## 11. Setting

### System Info

Show the info about the space of the built-in memory 、 Micro SD memory card, and the firmware version.

### Display

- Light Level  
From 1 to 5 (Default setting is 4)
- Font Color  
White (Default), Red, Dark Red, Green, Dark Green, Blue, Dark Blue, Light Blue, Green Blue, Purple, Dark Purple, Yellow, Dark Yellow, Gray, Black
- Default Background

### Light Time

- 5 sec
- 10sec
- 15 sec
- 20 sec (Default)
- 30 sec
- Always On

### Auto Off

- 10 min
- 30 min
- 1 hr
- Switch Off (Default)

### Language

- 简体中文
- 繁體中文
- English (Default)

### Speaker

- On (Default)
- Off

**Default**

Recover to the initial setting.

**Lock Time Setting**

- 5 sec
- 10 sec
- 30 sec
- 60 sec
- 5 min
- No Locking (Default)

## 12. Format List

|       | Format  | Codec           | Max. Resolution |
|-------|---------|-----------------|-----------------|
| Video | AVI     | DivX6           | 1280x720        |
|       |         | DivX5           | 1280x720        |
|       |         | DivX4           | 1280x720        |
|       |         | DivX3           | 1280x720        |
|       |         | Xvid            | 1280x720        |
|       | RM/RMVB | RM              | 1280x720        |
|       |         | RMVB            | 1280x720        |
|       | FLAV    | FLV             | 720x576         |
|       | Format  | Bit Ratio       |                 |
| Music | MP3     | 8Kbps~320Kbps   |                 |
|       | WMA     | 8Kbps~320Kbps   |                 |
|       | WAV     | 8Kbps~48Kbps    |                 |
|       | FLAC    | 300Kbps~700Kbps |                 |
|       | APE     | 300Kbps~700Kbps |                 |

## 13. Trouble shooting

| Symptom  | Possible solution   |
|--|---|
| The player cannot power on.                                      | - The battery level is too low. Connect to PC for charging.                     |
| The player cannot be charged automatically when connected to PC. | - Disconnect the player from PC.<br>- Then connect it again to PC for charging. |
| No sound during playback   | - Check whether the volume is too low.<br>- Ensure to plug the earphone firmly. |

|  |  |
|--|--|
| Keys don't work.                         | <ul style="list-style-type: none"> <li>- Check whether the key lock is off.</li> <li>- Restart the device.</li> </ul>  |
| WMP or PC does not recognize the player. | <ul style="list-style-type: none"> <li>- Ensure that you have Windows XP and Windows Service Pack 2 installed on your computer before proceeding.</li> <li>- Windows Media Player 10 is recommended.</li> <li>- You can download Windows Media Player 10 at <b><a href="http://www.windowsmedia.com">www.windowsmedia.com</a></b>.</li> <li>- Check whether the USB cable is attached firmly.</li> <li>- Check if your PC meets the minimum requirement.</li> <li>- Try to use any other USB port</li> </ul> |
| There is noise during playback.          | <ul style="list-style-type: none"> <li>- Check if the earphone plug is inserted firmly.</li> <li>- Check if the earphone plug is dirty.</li> <li>- The songs may be corrupted, please download other songs and try again.</li> </ul>   |
| The music file cannot be played.         | <ul style="list-style-type: none"> <li>- The file may not be compatible with our player.</li> <li>- Please check the supported formats in</li> </ul>   |

|  |   |
|--|---|
|  | <p>the section</p> <ul style="list-style-type: none"> <li>- “Technical Specification”.</li> <li>- Check if it is a copyright protected file, if so, the transfer should be downloaded by Windows Media Player and check if the usage of the copyright protected file is expired.</li> </ul> |
| Characters are corrupted.                      | <ul style="list-style-type: none"> <li>- Make sure to select the correct language.</li> <li>- Try to download some songs and go through auto music library building process.</li> </ul>   |
| File can't be seen in PC.                      | <ul style="list-style-type: none"> <li>- Exceed maximum file limit (1000 files)</li> </ul>  |
| Some files are missing in the player database. | <ul style="list-style-type: none"> <li>- Some file types are not supported</li> <li>- (supported types: MP3, JPG, WAV and WMA)</li> <li>- Exceed maximum file limit</li> </ul>  |
| Cannot transfer song to player.                | <ul style="list-style-type: none"> <li>- Capacity of the device is full</li> </ul>  |
| It cannot download files                       | <ul style="list-style-type: none"> <li>- Ensure that the computer is properly connected to the player</li> <li>- Ensure the memory space is full</li> <li>- Ensure the USB cable not damaged</li> </ul>   |
| Data loss                                      | <ul style="list-style-type: none"> <li>- Data is lost when voltage is unstable during the process of file download. (It is strongly advised that users backup all data as FunTwist shall not be liable</li> </ul>   |

|   |   |
|---|---|
| Data loss   | <ul style="list-style-type: none"> <li>- Data is lost when voltage is unstable during the process of file download. (It is strongly advised that users backup all data as FunTwist shall not be liable for any loss.)</li> </ul>  |
| Noise   | <ul style="list-style-type: none"> <li>- Please check whether the plug of the earphone is clean, for dirt may lead to noise.</li> <li>- Check whether music file is damaged. Try playing other music to confirm. If any file is damaged, it may lead to severe noise or skip of sound.</li> </ul> |
| Problems playing MP3/WMA files compressed by user | <ul style="list-style-type: none"> <li>- The player supports MP3 up to 320kbps and WMA up to 320 kbps. Please convert the music within this limit.</li> </ul>   |
| No display on screen despite power being on       | <ul style="list-style-type: none"> <li>- Check if power is low</li> <li>- The firmware might be missing. In this case, program recovery or upgrade is necessary</li> </ul>  |
| A malfunction occurs                              | <ul style="list-style-type: none"> <li>- Probe the reset hole to reset the</li> </ul>   |